

# FOREST RIVER SALEM



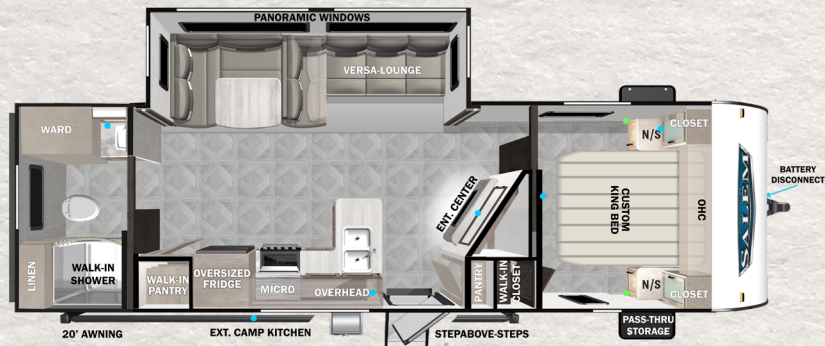
**MODEL #: 22RBS**

**HITCH: 765 LBS UVW: 5,928 LBS LENGTH: 26'11"**



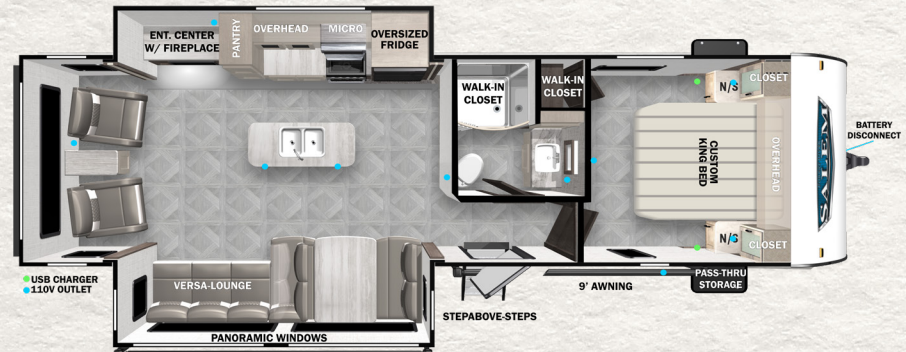
**MODEL #: 26DBUD**

**HITCH: 795 LBS UVW: 6,923 LBS LENGTH: 33'3"**



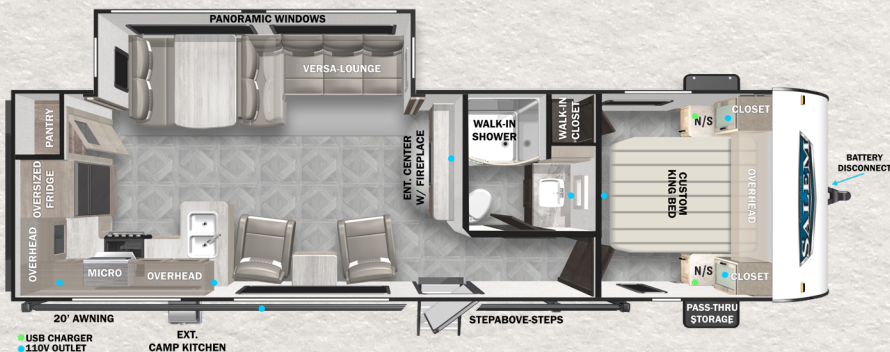
**MODEL #: 26RBS**

**HITCH: 640 LBS UVW: 6,568 LBS LENGTH: 30'4"**



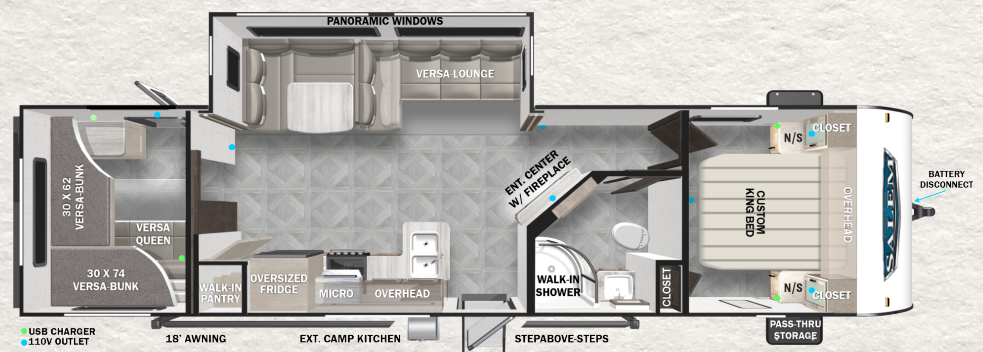
**MODEL #: 27RE**

**HITCH: 955 LBS UVW: 7,583 LBS LENGTH: 33'8"**



**MODEL #: 27RK**

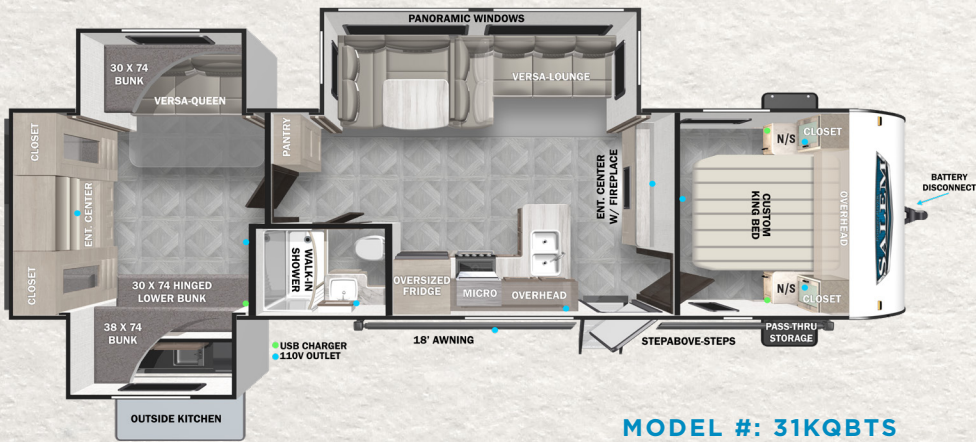
**HITCH: 955 LBS UVW: 6,863 LBS LENGTH: 33'6"**



**MODEL #: 29VBUD**

**HITCH: 910 LBS UVW: 7,728 LBS LENGTH: 36'2"**

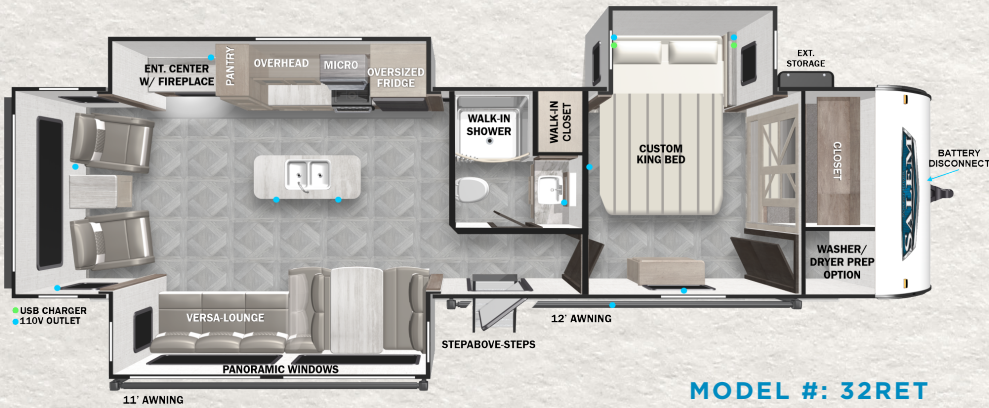




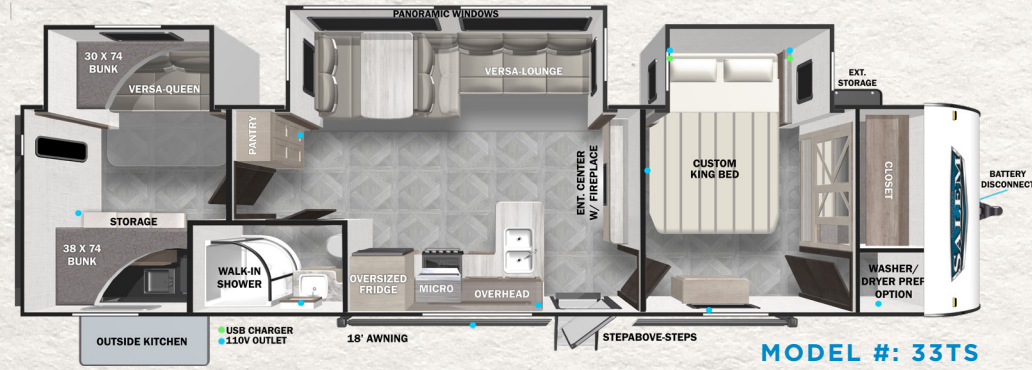
**MODEL #: 31QBTS**  
**HITCH: 905 LBS UUV: 8,573 LBS LENGTH: 36'7"**



**MODEL #: 32BHDS**  
**HITCH: 859 LBS UUV: 7,993 LBS LENGTH: 36'5"**



**MODEL #: 32RET**  
**HITCH: 935 LBS UUV: 8,853 LBS LENGTH: 37'**



**MODEL #: 33TS**  
**HITCH: 1,088 LBS UUV: 9,276 LBS LENGTH: 38'9"**



**MODEL #: 36VBDS**  
**HITCH: 1,155 LBS UUV: 8,533 LBS LENGTH: 38'11"**

For detailed specifications, pictures & 360 Tours, visit [www.forestriverinc.com/Salem](http://www.forestriverinc.com/Salem) OR Scan the QR code!

MEET YOUR SALEM DEALER

All information contained in this brochure is believed to be accurate at the time of publication. However, during the model year, it may be necessary to make revisions and Forest River, Inc., reserves the right to make all such changes without notice, including prices, colors, materials, equipment and specifications as well as the addition of new models and the discontinuance of models shown in this brochure. Therefore, please consult with your Forest River dealer and confirm the existence of any materials, design or specifications that are material to your purchase decision. © 2022 Salem, a Division of Forest River, Inc., a Berkshire Hathaway company. All Rights Reserved.

CUSTOMER SATISFACTION  
**FOREST RIVER** encourages you to  
**BUY LOCAL**

**FREE MEMBERSHIP**  
 to Forest River Owners' Group  
[www.forestriverfrog.com](http://www.forestriverfrog.com)

Learn More  
 Scan this barcode using a QR Reader on your smart phone to learn more about Forest River.

A Berkshire Hathaway company.