

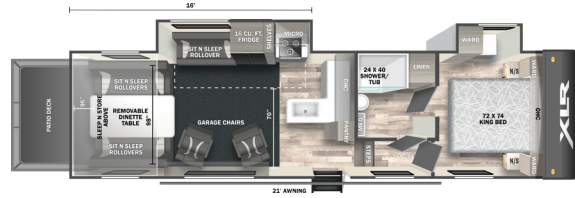
XLR TOY HAULERS

BOOST

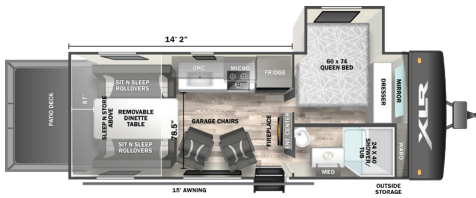
2023



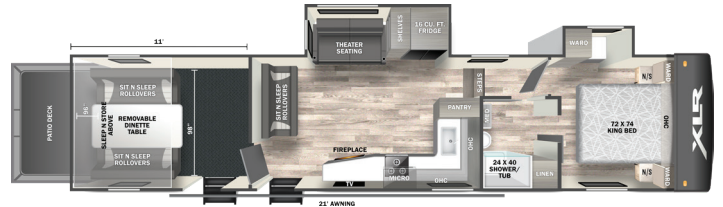
These 102" Wide Body Boost Travel Trailers and Fifth Wheels are four-seat side-by-side ready! The increased 87" ramp door opening on Travel Trailers and 96" on Fifth Wheels allows for an assortment of equipment you can take with you.



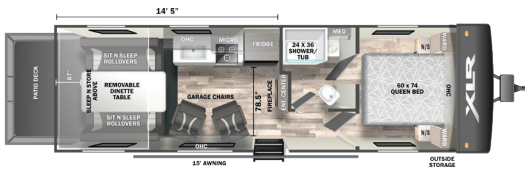
32XLRXF16	Hitch Weight (lbs)	UWV (lbs)	CCC (lbs)	Exterior Length	Exterior Height	Exterior Width	Water Capacities (fresh / gray / black)
Awning 21'	2640	10502	4138	34' 9"	13' 5"	102"	87/38/38



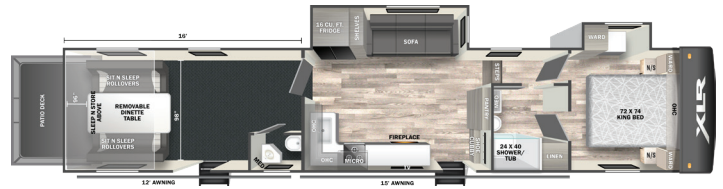
21XLRX	Hitch Weight (lbs)	UWV (lbs)	CCC (lbs)	Exterior Length	Exterior Height	Exterior Width	Water Capacities (fresh / gray / black)
Awning 15'	1456	7014	4642	27' 3"	12' 5"	102"	87/38/38



35XLRXF11	Hitch Weight (lbs)	UWV (lbs)	CCC (lbs)	Exterior Length	Exterior Height	Exterior Width	Water Capacities (fresh / gray / black)
Awning 21'	TBD	TBD	TBD	38' 8"	13' 5"	102"	87/38/76



27XLRX	Hitch Weight (lbs)	UWV (lbs)	CCC (lbs)	Exterior Length	Exterior Height	Exterior Width	Water Capacities (fresh / gray / black)
Awning 15'	1252	6974	4478	30' 5"	12' 5"	102"	87/38/38



36XLRXF16	Hitch Weight (lbs)	UWV (lbs)	CCC (lbs)	Exterior Length	Exterior Height	Exterior Width	Water Capacities (fresh / gray / black)
Awning 12' & 15'	TBD	TBD	TBD	43' 9"	13' 5"	102"	87/76/76



29XLRX	Hitch Weight (lbs)	UWV (lbs)	CCC (lbs)	Exterior Length	Exterior Height	Exterior Width	Water Capacities (fresh / gray / black)
Awning 21'	1698	9418	4280	35' 11"	12' 5"	102"	87/76/38



37XLRXF14	Hitch Weight (lbs)	UWV (lbs)	CCC (lbs)	Exterior Length	Exterior Height	Exterior Width	Water Capacities (fresh / gray / black)
Awning 12' & 15'	2950	12720	8230	43'	13' 5"	102"	87/38/76



BOOST ACTION

SCAN THE QR CODE WITH YOUR PHONE CAMERA APP FOR MORE INFORMATION:



FLOOR PLANS



MORE FEATURES



VIDEOS

EXTERIOR

- 15 K A/C Ducted Roof Vent
- Friction Hinge main entry door/ With large grab handle
- Smooth metal Front (TT)
- Fiberglass Front Cap (FW)
- 48" LED front Fiberglass cap lighting (FW)
- Body Armor Enclosed & insulated Underbelly
- Enclosed holding Tanks
- 1 ½ inch Fresh Water Drain Valve
- Seamless PVC Roof System
- NXG Engineered Frames
- Digital TV Antenna
- Furrion External Speakers
- Pet leash Latch
- 12'-21' Power Awning with Blue LED lights
- 5" Radius wood Frame Roof
- Laminated Weatherproof Ramp door
- Insulated Storage doors
- Oversized holding Tanks
- Battery Disconnect
- High-capacity Water pump
- (2) 20lb propane Tanks
- Tinted safety glass windows
- Full size Spare tire
- Black Tank flush
- Back up Camera Prep
- Rear LED lights over Ramp door
- Nitrogen filled Black steel Wheels
- Quick LP connects
- Detachable Marine grade power cord
- MorRyde Main entry stable Step
- Power tongue Jack or landing Gear

INTERIOR

- Dual Zone/ HDMI/BT Furrion Radio
- 2 Furrion interior Speakers

- 17" Black Oven w/ glass cooktop
- 10Cu FT 12VDC Black Stainless-Steel Refrigerator (TT)
- 16Cu FT 12VDC Black refrigerator (FW)
- 35,000 BTU Forced Air Ducted Furnace
- Deep-seated Stainless-Steel Kitchen Sink
- Oval Residential Stainless-Steel Lavvy Sinks
- Solid Surface countertops
- Ball Bearing Extensions drawer guides
- Pre-drilled Cabinets
- Solid Core Cabinet Stiles
- LED Interior lighting
- Tankless Water Heater
- Skylight over Shower
- Night Stands/Bedroom shelves
- Power vent Fan
- Medicine Cabinet with mirror
- Foot Flush Toilet
- Residential walk-in showers
- USB Chargers
- RV Queen bed (TT)
- King bed (FW)
- Satellite and Cable Hook ups
- Magnetic Screen Wall
- Oil and Gas resistant residential linoleum
- Large Panoramic Windows
- Solid interior Passage Doors
- 5,000 BTU Fireplace (N/A 32XLRF16)

REV PACKAGE

- TPMS – Tire Pressure monitor system
- Fiberglass High gloss Exterior Sidewall
- Industrial Garage Flooring (FW & TT)
- Ramp Door Patio System
- Sleep N Store Manual Bed System (FW & TT)
- Sit N Sleep w/ Quick Release (FW & TT)
- Renewable Energy 200W Solar Package – 30AMP Monitor/Battery (FW & TT)
- Roof Ladder – Collapsible (FW & TT)
- 86 Gallon Fresh Water Tank Capacity (FW & TT)
- 30 Amp Service w/Detachable Cord (Travel Trailers Only)
- 50 Amp Service w/Detachable Cord (Fifth Wheels Only)
- 2nd A/C Prep (N/A 21XLRX)
- Ducted A/C
- TV Prep – Backer, Bracket & Hook Ups Bedroom/Living/Exterior (FW & TT)
- External 30 gallon Fuel Cell w/Pump
- Generator Prep (FW & TT)
- External LED Strip Lighting
- Main Entry Upgraded Step
- Friction Door Hinge (FW & TT)
- LED Interior Lights (FW & TT)
- Outside TV Bracket & Hook Ups
- Power Awning
- Power Tongue Jack or Power Landing Gear (TT or FW)
- Residential Kitchen Faucet
- Sink Cover / Dish Rack (FW & TT)
- Decorative Kitchen Backsplash
- Decorative Bathroom Wall
- Decorative Glass Kitchen Upper Cabinet Doors
- Ramp Light
- LP Quick Connect (TT & FW)
- Glass Shower Doors
- Skylight over Tub (FW & TT)
- Vent Fan Main Bathroom
- Black Tank Flush (FW & TT)
- Decorative Vinyl Flooring (FW & TT)
- Spare Tire (FW & TT)
- Black Steel Wheels (FW & TT)

- Battery Disconnect (FW & TT)
- 5,000 lbs. Tiedowns
- Pet Leash Latch (FW & TT)
- Exterior Hot & Cold Shower
- Magnetic Screen Wall (FW and TT)
- Rear Beaver Tail Frame (FW & TT)
- Slide Topper prep
- Garage Chairs – STD 21XLRX, 27XLRX, 32XLXF16 (2) EACH (TT & FW)
- Theater Seating Sofa – STD 29XLRX, 36XLRXF16, 35XLRXF11, 37XLRXF14 (TT & FW)

FURRION PACKAGE

- Tankless Water Heater
- 10 CF - 12VDC Black Refrigerator (TT) and 16CF - 12VDC Black Refrigerator(FW)
- 17" Oven w/ 3 Burner Cooktop w/ Glass Cover
- 0.9 Microwave
- Slim Range Hood Vent
- 2 Zone - HDMI / BT Radio
- (2) Interior & (2) Exterior Furrion Speakers
- 30" - 5K BTU Fireplace (N/A 32XLRF16)
- 15 BTU STD Main Roof A/C
- Back Up Camera Ready
- Digital TV Antenna

CLIMATE COMFORT PACKAGE

- Tinted Safety Glass Windows
- (R7) Freon Rigid Urethane Foam Sidewall and (R11) Freon Rigid Urethane Foam Roof Insulation with Alumifoil Insulation Wrapping
- (R7) Fiberglass Flooring Insulation
- Alumifoil Insulated Enclosed Underbelly
- Roof Attic Vents

OPTIONAL EQUIPMENT

- 2nd 15K A/C (Requires 50AMP) (27XLRX & 29XLRX Located In Garage) (N/A 21XLRX)
- 50AMP Service - 2nd A/C Prep (TT Only / 50AMP Is STD on FW)
- 4.5 Gen Powered by Yamaha (TT - N/A with 50AMP)
- 5.5 GEN Powered by Yamaha Requires 50 AMP on TT – N/A 21XLRX)
- Inverter 2000W – General Purpose Outlets Only
- Electric Stabilizer Jacks
- Ultracold Weather Heated Holding Tank 12V Pads
- Garage Chairs
- 58" Steel Roll Over Sofa Door Side(21XLRX, 27XLRX, 32XLRF16 N/A All Other Models)
- Bench Dinette w/ Table IPO Theater Seat Sofa (29XLRX, 37XLRXF14)
- Ramp opening 3 Season Door – (W/ Panel Kit for insulation- TT & FW)
- Hide n Store – optional Drop-down Storage Area (FW ONLY)

forestriverinc.com/rvs/toy-haulers/boost

Actual towing capacity is dependent on your particular loading and towing circumstances, which includes GVWR, GAWR and GCWR, as well as adequate trailer brakes. Please refer to the Owners Manual of your vehicle for further information. All information contained in this brochure is believed to be accurate at the time of publication. However, during the model year, it may be necessary to make revisions and Forest River, Inc., reserves the right to make all such changes without notice, including prices, colors, materials, equipment and specifications as well as the addition of new models and the discontinuance of models shown in this brochure. Therefore, please consult with your Forest River dealer and confirm the existence of any materials, design or specifications that are material to your purchase decision. ©2022 XLR, a Division of Forest River, Inc., a Berkshire Hathaway company. All Rights Reserved. 9/22



Learn More
Scan this barcode using a QR Reader on your smart phone to learn more about Forest River.

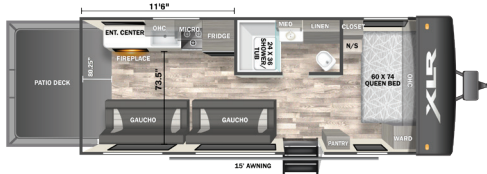


YOUR XLR ACTION CAMPING™ DEALER

ACTION CAMPING™

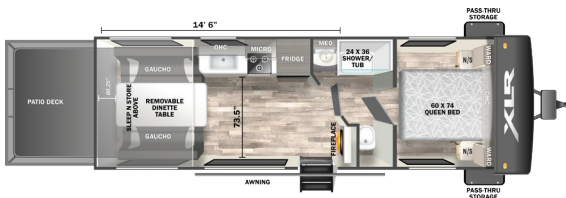


MICRO BOOST

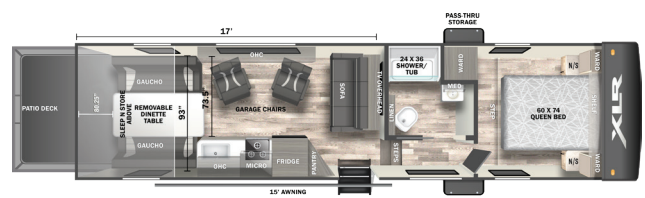


19XLRE	Hitch Weight (lbs)	UWV (lbs)	CCC (lbs)	Exterior Length	Exterior Height	Exterior Width	Water Capacities (fresh / gray / black)
Awning 15'	830	5352	3478	27' 1"	11' 2"	96"	87/38/38

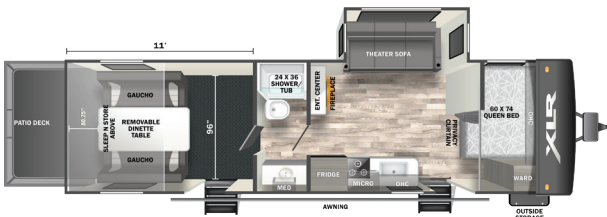
Easier to tow and lighter weight mean the Micro Boost models, in both Travel Trailers and Fifth Wheels, will deliver. Take all of your toys on your next adventure with 80-1/4" ramp door opening!



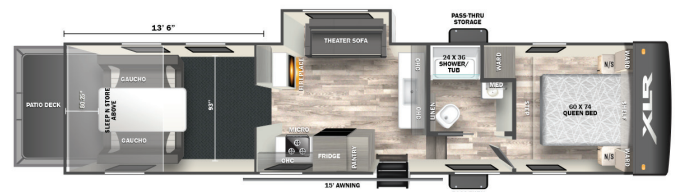
25XLRE	Hitch Weight (lbs)	UWV (lbs)	CCC (lbs)	Exterior Length	Exterior Height	Exterior Width	Water Capacities (fresh / gray / black)
Awning 15'	884	5822	3062	28' 9"	11' 2"	96"	87/38/38



301XLRE	Hitch Weight (lbs)	UWV (lbs)	CCC (lbs)	Exterior Length	Exterior Height	Exterior Width	Water Capacities (fresh / gray / black)
Awning 15'	1456	8348	3308	32' 6"	12' 10"	96"	87/38/38



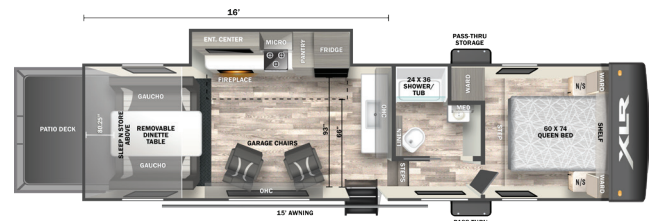
27XLRE	Hitch Weight (lbs)	UWV (lbs)	CCC (lbs)	Exterior Length	Exterior Height	Exterior Width	Water Capacities (fresh / gray / black)
Awning 15'	1024	6860	2164	33' 5"	11' 2"	96"	87/38/38



305XLRE	Hitch Weight (lbs)	UWV (lbs)	CCC (lbs)	Exterior Length	Exterior Height	Exterior Width	Water Capacities (fresh / gray / black)
Awning 15'	TBD	TBD	TBD	38' 7"	12' 10"	96"	87/38/38



29XLRE	Hitch Weight (lbs)	UWV (lbs)	CCC (lbs)	Exterior Length	Exterior Height	Exterior Width	Water Capacities (fresh / gray / black)
Awning 21'	1146	7112	4234	33' 11"	11' 2"	96"	87/38/38



335XLRE	Hitch Weight (lbs)	UWV (lbs)	CCC (lbs)	Exterior Length	Exterior Height	Exterior Width	Water Capacities (fresh / gray / black)
Awning 15'	1674	8702	3172	32' 6"	12' 10"	96"	87/38/38



MICRO BOOST ACTION

SCAN THE QR CODE WITH YOUR PHONE CAMERA APP FOR MORE INFORMATION:



FLOOR PLANS



MORE FEATURES



VIDEOS

EXTERIOR

- 15 K A/C Ducted Roof Vent
- Friction Hinge main entry door/ With large grab handle
- Smooth metal Front
- Body Armor Enclosed & insulated Underbelly
- Enclosed holding Tanks
- 1 ½ inch Fresh Water Drain Valve
- Seamless PVC Roof System
- NXG Engineered Frames
- Digital TV Antenna
- Furrion External Speakers
- Pet leash Latch
- 12'-21' Power Awning with Blue LED lights
- 5" Radius wood Frame Roof
- Laminated Weatherproof Ramp door
- Insulated Storage doors
- Oversized holding Tanks
- Battery Disconnect
- High-capacity Water pump
- (2) 20lb propane Tanks
- Tinted safety glass windows
- Full size Spare tire
- Black Tank flush
- Back up Camera Prep
- Rear LED lights over Ramp door
- Nitrogen filled Black steel Wheels
- Quick LP connects
- Detachable Marine grade power cord
- MorRyde Main entry stable Step
- Power tongue Jack or landing Gear

INTERIOR

- Dual Zone/ HDMI/BT Furrion Radio
- 2 Furrion interior Speakers
- 17" Black Oven w/ glass cooktop
- 10Cu FT 12VDC Black Stainless-Steel Refrigerator
- 20,000 BTU Forced Air Ducted Furnace
- Deep-seated Stainless-Steel Kitchen Sink
- Oval Residential Stainless-Steel Lavvy Sinks
- Solid Surface countertops
- Ball Bearing Extensions drawer guides
- Pre-drilled Cabinets
- Solid Core Cabinet Stiles
- Led Interior lighting
- Tankless Water Heater
- Skylight over Shower
- Power vent Fan
- Medicine Cabinet with mirror
- Foot Flush Toilet
- Residential walk-in showers
- USB Chargers
- RV Queen bed
- Satellite and Cable Hook ups
- Magnetic Screen Wall
- Oil and Gas resistant residential linoleum
- Large Panoramic Windows
- Solid interior Passage Doors
- 5,000 BTU Fireplace (N/A 301XLRE)

XPLORE PACKAGE

- TPMS – Tire Pressure monitor system
- Sleep N Store Manual Bed System (FW & TT) N/A on the 19XLRE

- Sit N Sleep w/ Quick Release (FW & TT)
- Main Entry Upgraded Step (FW & TT)
- Friction Hinge Entry Door (FW & TT)
- VIP Patio Deck
- Industrial Garage Flooring (FW & TT)
- Magnetic Screen Wall (FW and TT)
- EXT. LED Strip Scare Light (FW & TT)
- LED Interior Lights (FW & TT)

- PWR Awning
- 50AMP Service FW Only
- Exterior Hot & Cold Shower
- Skylight over Tub
- Vent Fan Main Bathroom
- Ducted A/C (FW & TT)
- Black Tank Flush (FW & TT)
- PWR Tongue Jack or PWR Landing Gear (TT or FW)
- TV Backer, Bracket & Hook Ups Bedroom/Living/Exterior (FW & TT)
- Renewable Energy Package – 200W Solar Panel & 30AMP Wall Monitor (FW & TT)
- Residential Stainless Steel Kitchen & Lavvy Sinks (FW & TT)
- Residential Kitchen Faucet (FW & TT)
- Sink Cover / Dish Rack (FW & TT)
- Decorative Kitchen Backsplash (FW & TT)
- Decorative Glass Cabinets door kitchen
- Decorative Bathroom Wall
- Tub Surround (FW & TT)
- USB Charging Station (FW & TT)
- TV Antenna (FW & TT)
- LP Quick Connect (FW & TT)
- 5,000 lbs. Tiedowns (FW & TT)

FURRION PACKAGE

- Tankless Water Heater
- 10 CF - 12V Black Refrigerator
- 17" Oven w/ 3 Burner Cooktop w/ Glass Cover
- 0.9 Microwave
- Slim Range Hood Vent
- 2 Zone - HDMI / BT Radio
- (2) Interior & (2) Exterior Marine Grade Speaker
- 30" – 5K BTU Fireplace (N/A 301XLRE)
- 15 BTU STD Main Roof A/C
- Back Up Camera Ready
- Digital TV Antenna

CLIMATE COMFORT PACKAGE

- Tinted Safety Glass Windows
- (R7) Freon Rigid Urethane Foam Sidewall
- (R11) Fiberglass Roof Insulation with Alumifoil Insulation Wrapping
- (R7) Fiberglass Flooring Insulation
- Alumifoil Insulated Enclosed Underbelly
- Roof Attic Vents

OPTIONAL EQUIPMENT

- 2nd 15K A/C(Requires 50AMP) (N/A 25XLRE)
- 50AMP Service - 2nd A/C Prep (TT only - 50AMP STD on FW - 27XLRE & 29XLRE Garage)

- TT Fiberglass EXT Sidewall (includes upgraded graphics package) (TT)
- FW Fiberglass EXT Sidewall (includes upgraded graphics package) (FW Mandatory) (Not Option)

- Inverter 2000W – General Purpose Outlets Only
- Ultracold Weather Heated Holding Tank 12V Pads
- Electric Stabilizer Jacks (FW Only)

- Garage Chair (STD 301XLRE & 335XLRE)
- Bench Dinette w/ Table IPO Theater Seating (27XLRE)
- 30 GA Fuel Cell with Pumping Station – NO GEN PREP (FW & TT)



forestriverinc.com/rvs/toy-haulers/boost

Actual towing capacity is dependent on your particular loading and towing circumstances, which includes GVWR, GAWR and GCWR, as well as adequate trailer brakes. Please refer to the Owners Manual of your vehicle for further information. All information contained in this brochure is believed to be accurate at the time of publication. However, during the model year, it may be necessary to make revisions and Forest River, Inc., reserves the right to make all such changes without notice, including prices, colors, materials, equipment and specifications as well as the addition of new models and the discontinuance of models shown in this brochure. Therefore, please consult with your Forest River dealer and confirm the existence of any materials, design or specifications that are material to your purchase decision. ©2022 XLR, a Division of Forest River, Inc., a Berkshire Hathaway company. All Rights Reserved. 9/22



Learn More
Scan this barcode using a QR Reader on your smart phone to learn more about Forest River.



ACTION CAMPING™

YOUR XLR ACTION CAMPING™ DEALER